

# walton

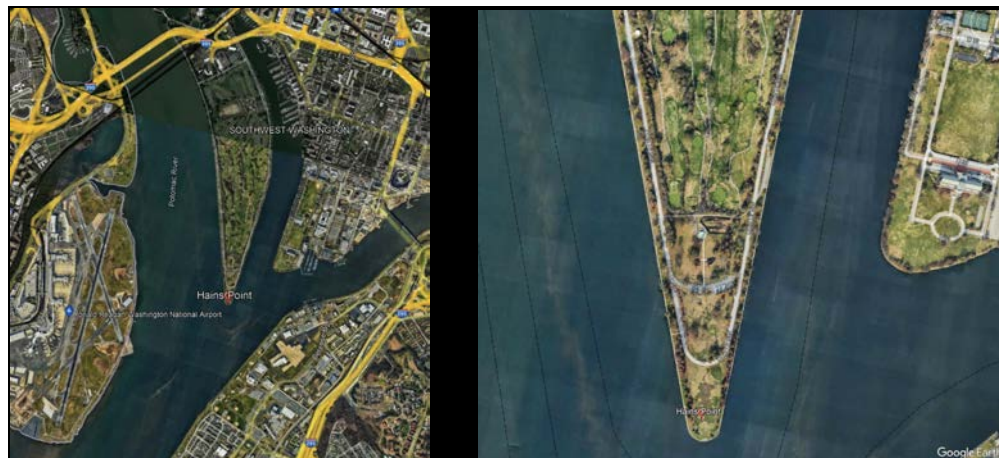
## STUDIO

Bermudez / Price

### PART 3 DESIGN PART I

STARTS Wednesday 27 September  
DUE Friday 20 October at 2:00 PM (Jury)

INTENTION Bring the insights gathered in the initial two parts of the studio to inform the development of a design parti for a Catholic Church dedicated to ‘your’ Saint to be located in Haines Point, Washington DC.



Pay particular attention to (a) the role of “metaphor” as phenomenological and conceptual device to guide your design exploration and development, (b) programmatic considerations regarding the Catholic faith surrounding Church architecture as well as related matters (i.e., your Saint and what such focus may demand), and (c) urban and landscape/natural conditions. In other words, this phase is about finding, exploring, and expressing a METAPHOR architecturally in its most fundamental and integrated (1) *design clarity*, (2) *experiential/ritual quality*, and (3) *symbolism*. Please:

- Carry your attitude/vision vis-à-vis the topic at hand;
- remain simple;
- Consider urban, architectural, and natural conditions in close dialogue with one another;
- Adapt the program in concert with its parti, your Saint, and urban/natural context;
- Remain attentive to phenomenological (experience) implications;

**SITE VISIT** We will have the whole studio visiting the site on Wednesday 27 September. We'll meet at the site at 3:00 pm. Please, bring all the necessary materials to record your impressions (i.e., camera, sketchbook, measuring tape, etc.)

**BRIEF** Saint XXXX Catholic Church in Haines Point, Washington, DC.  
Total Size: 40,000-60,000 sq.ft. to include normal Catholic Church Functional Spaces (refer to studio book *The Church* by Cardinal Donald Wuerl and Mike Aquilina (New York: Random House, 2013) .... plus:

- a. Entry Atrium
- b. Housing for 3 Priests
- c. Social Events Rooms?
- d. Restrooms
- e. Choir?
- f. Outdoor Meditative Areas
- g. Gardens
- h. Pilgrimage reception/Processional Walking to Entrance ?
- i. Program for responding to your Saint's calling
- j. Parking: 120 Spaces Remote as a Garden of Joy, not only a parking lot

Basic Energy Saving Directives:

- Passive Solar Heat and Shade Cooling Skins,
- Shades for cooling and Passive Sun Heating,
- Super High-Tech Electrical Technology, and
- Avoid Green roofs for this project, only green landscapes please.
- (More to be added in person by Travis Price)

Studio Design Presentation Musts:

- a. Modern Design only
- b. Poetic Prayers, Metaphors written and directing the design
- c. Parking and a Sacred Processional from Parking to Church
- d. You may erase the driveway to the point if you wish

**ASPIRATION** The following quotes have proven inspirational in the past so here they go again:

*The work of students of architecture should not be directed to the solution of problems, but rather to sensing the nature of a thing.*

Louis Kahn

*It doesn't matter how well you do the wrong thing.*

Mies van der Rohe

*In a complete and successful work there are hidden masses of implications, a veritable world which reveals itself to those whom it may concern—which means: to those who deserve it.*

Le Corbusier (1948)

*The architect starts with the abstract world, and due to the nature of his work, works toward the real world. The significant architect is one who, when finished with a work, is as close to that original abstraction as he could possibly be . . . and that is also what distinguishes architects from builders.*

John Hejduk (1985)

*Without an IDEA, Architecture would be pointless, only empty form... An idea is capable of: serving (function), responding to a place (context), resolving itself geometrically (composition), materializing itself physically (construction)... Architecture is always a built IDEA. The history of Architecture is the History of built IDEAS. Forms change, they crumble, but the IDEAS remain, they are eternal.*

Alberto Campo Baeza, 1994 (2012 Walton Critic)

*The architect starts with the abstract world, and due to the nature of his work, works toward the real world. The significant architect is one who, when finished with a work, is as close to that original abstraction as he could possibly be . . . and that is also what distinguishes architects from builders.*

John Hejduk (1985)

*The man who listens to reason is lost: reason enslaves all whose minds are not strong enough to master her.*

George Bernard Shaw

*Task: to create a building that absorbs you completely, in the same way that the solidity of a mountain, the vastness of the sea, or the immensity of the sky captures and holds your vision.*

Claudio Silvestrin (2013 Walton Critic)

*Lukewarm won't do. Halfhearted holding back, well-enough, getting by? Not here.*

Rumi (1207-1273)

*Form follows Feeling.*

Suchi Reddy (2022 Walton Critic)

**PRODUCT**      Presentation Requirements – See below.

**GRADE**          Part 3 (Design Parti) counts for 25 % of the course grade.