

walton

STUDIO

Bermudez + Brown

SITE ANALYSIS



The next 25 years of Union Station ... northward. And the south?

STARTS DUE

Friday 18 September, 2020
Friday 25 September, 2020

APPROACH

We have been exploring the nature of a Sanctuary for 2045 from the inside-out, meaning, what the world in 25-50 years will need to safeguard, celebrate, consecrate, encourage. While more work remains regarding its programmatic definition, it is now time to turn our attention to the pressures and opportunities coming from without. Architect Robert Venturi once said that architecture happens at the wall, that is, at the interface between internal and external forces. I love this concept even though, like all such powerful statements, it misses other dimensions of architecture. But, for the moment, we'll consider all those forces and potentials that your building must respond to or tap into.

You will NOT approach this site analysis like in the past for two reasons. First because we are dealing with a world or context that, literally, doesn't exist yet. Second because this studio is speculative and proactively proposes rather than responds or reacts like most architects do. Please, study the following conditions of your site vis-a-vis your design problem and consider how this outside-in investigation will impact your vision.

Environment: consider the climatic conditions of Washington DC in mid to late 21st Century. Consider sun, light, water, sky, clouds, temperature, vegetation, and seasons.

History: establish a timeline with fundamental events (and formal/physical expressions) between 1800 (or earlier) to 2100.

Culture: society, rituals, beliefs, government, economy, politics, fashion, and more of 2045-2070

Physicality: form, fabric, density, space, scale, urban order, symbolism, materials, nearby context

Function/Behavior: traffic, noise, people, activities, land use, etc.

Character: experience, time, atmosphere, lived-world, spirit of the place (genius loci)

As you look into each of these 6 aspects of the site, remember all the things we studied at the start of the semester, particularly:

1. Global warming and climate change;
2. Major technological, social, demographic, and other transformations; and
3. Your sanctuary (how does your idea inform the reading of the site? Does it make sense? Or does it need to be changed, dropped, enhanced?)

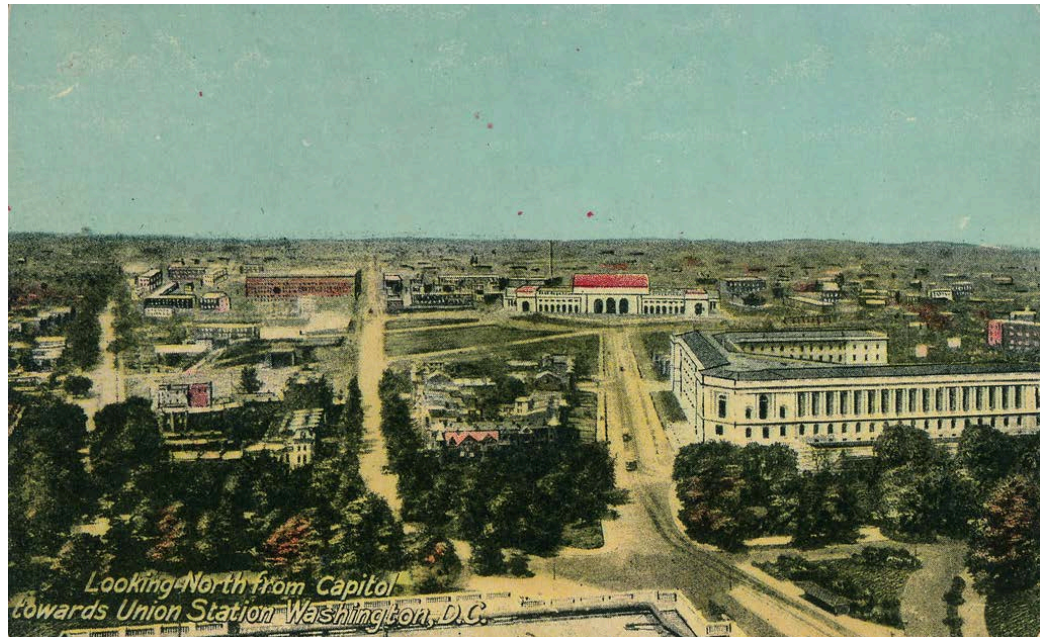
Do approach the analysis with a bias: an honest, professing bias that helps you to genuinely decipher what could/should happen in such significant piece of land.

REQUIRED

- (1) GRAPHIC SUMMARY of the above studies (TEAM WORK); and
- (2) STORY: a 300-word story that, in words, paints a picture of what this place looks, feels like in mid/late 21st Century. The story should point at or suggest how such world demands, needs, calls for your sanctuary (PERSONAL WORK)

TEAMS

Groups of 2 or 3 people (assigned – see email)



1909 (Looking North from Capitol towards Union Station)



2068 !



2103 after reconstruction

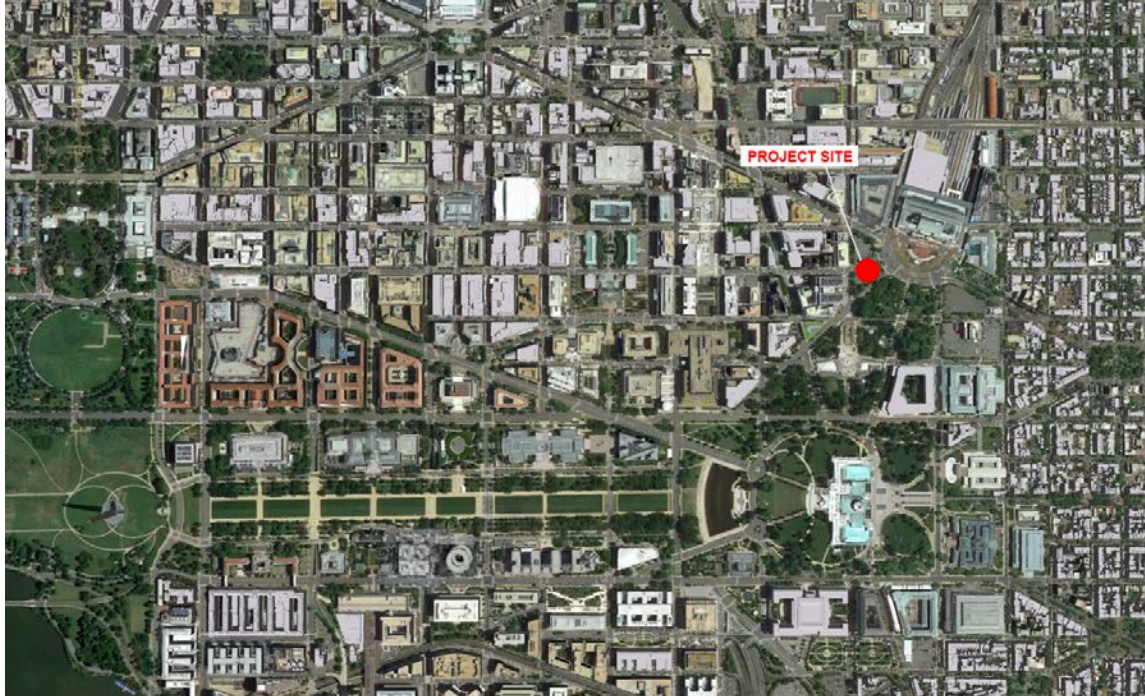


2134 ...

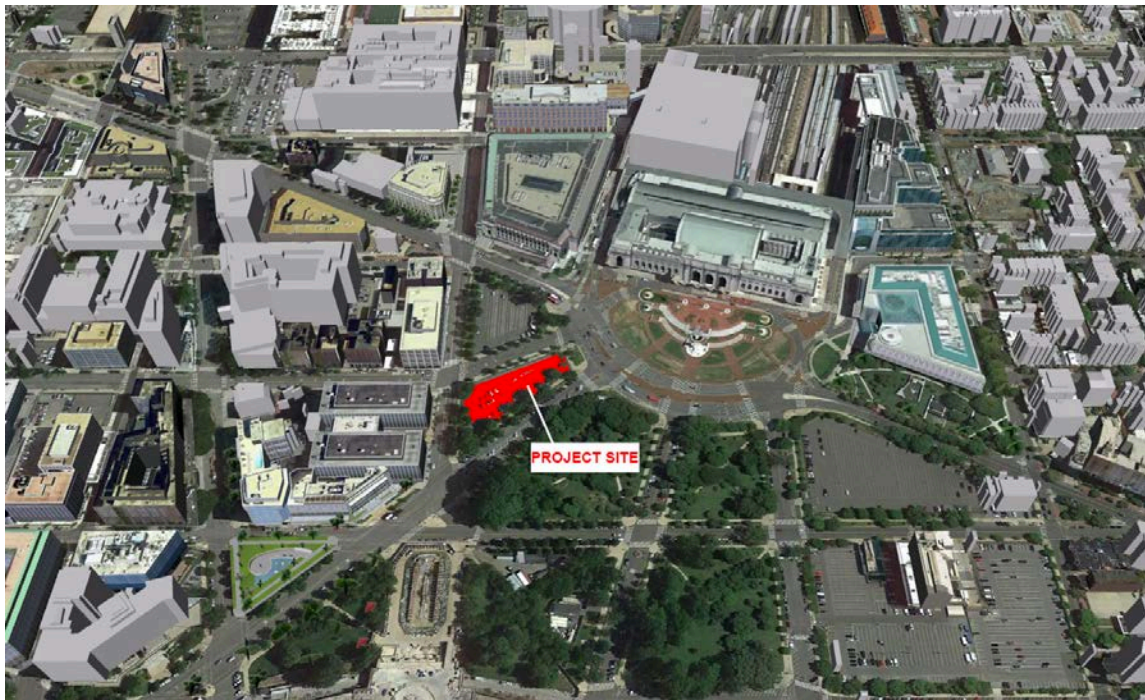
SANCTUARY

Project site

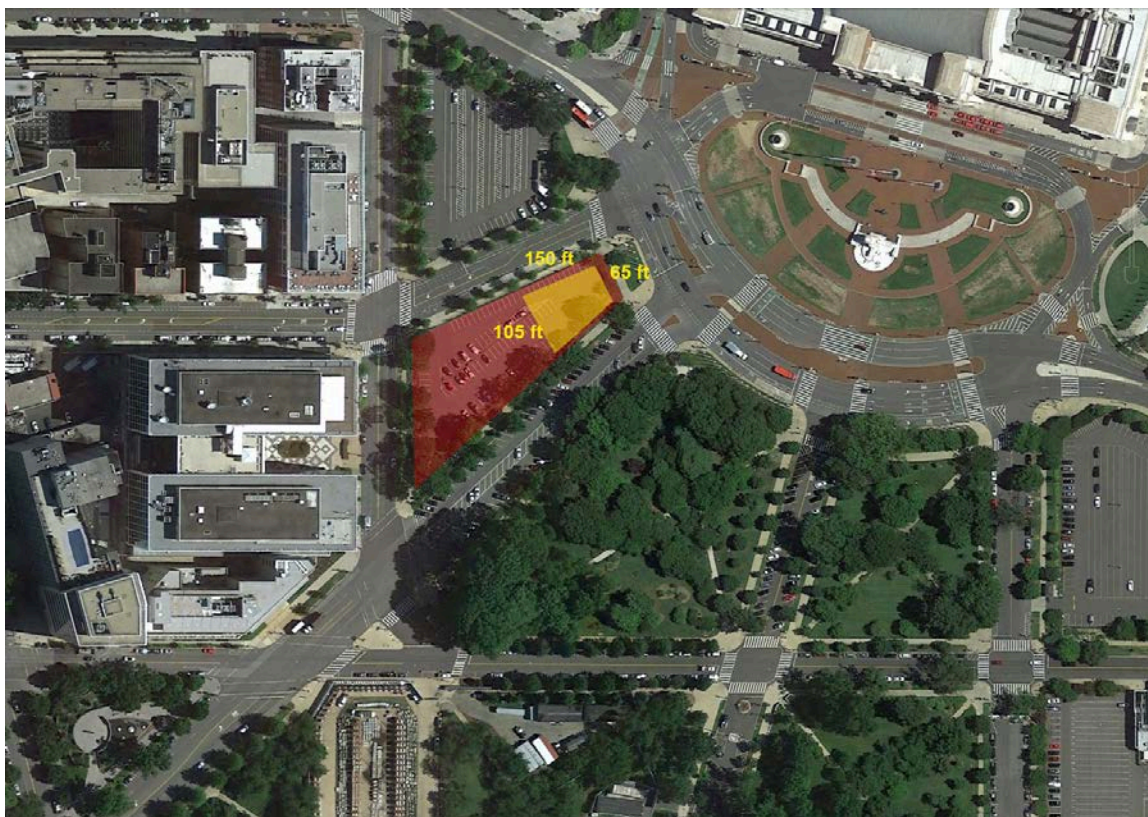
Coordinates: 38.896118,-77.008278. (in front of Union Station)



Context



Close-up



Possible building location and site dimensions